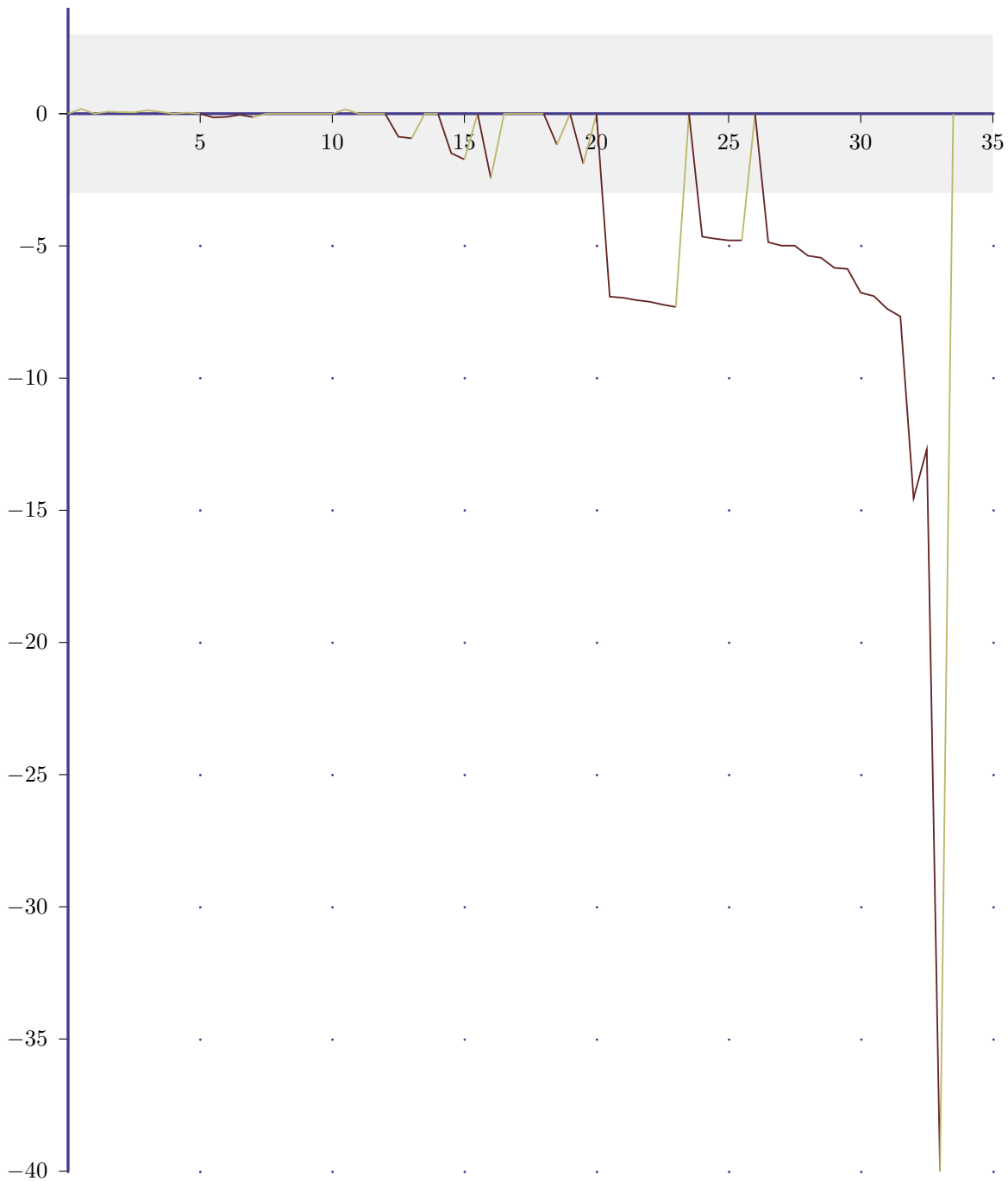


White: Mark Dennehy (1019)
 Black: Finn McDonnell (1112)
 Opening ECO: A36f
 Result: 0-1

Bodley Cup 2014 (1)
 St.Benildus Chess Club
 2014.09.24

Analysis Scoregraph:



1 c4 c5
 2 g3

Straightforward Tony Kosten approach here +0.00

Straight out of book up to this point with a Symmetrical English 5.d3 opening. This is my first major decision point and I went d3 instead of e4 because Finn led off with c5. e4 might have been playable here, but this felt more thematic. +0.13

2 ... g6
 3 ♖g2 ♖g7
 4 ♜c3 ♜c6
 5 d3

5 ... e6
 6 e3

Thinking about e4 and a Botvinnick setup, but with the

light bishop trapped in on c8 and out of a symmetrical variation to boot, didn't think this would work. But I don't want to play Nf3 and block my light bishop, so I play e3. -0.13

6 ... ♖ge7
7 ♖ge2 O-O
8 O-O f5

This is as far as I can find in book with Pita-v-Despaigne (1992) which ended in a draw. In the game though, I was thinking he'd just opened up his kingside, and that convinced me to abandon the b4-b5 push plan and revert to the kingside push instead. +0.39

9 e4

Not great, giving up a tempo to get back to where I originally thought of going on move 6, and basically hoping he'll push f4 (which he won't). Skittles room says d4 was the better move here, and having played it over, I agree - I missed the exN step in the swap on d4 that could happen here with cxd, Nxd4, NxN, exN, Bxd4, QxB, probably because I kept seeing the board after e4 for some reason. Bother. +0.06

9 ... a6

Prepping for b5 maybe? Well, readily countered. +0.21

10 ♗e3

Needed to develop the bishop anyway. Wouldn't actually want to take on c5, the bishop would wind up a bit disjointed if I did I think. +0.13

10 ... b6

Finn obviously thought I would play Bxc5 though! +0.18

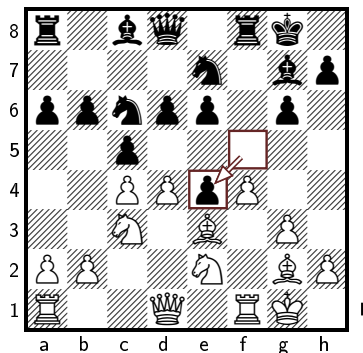
11 f4

And this isn't all that great. Skittles room says that with everything locked up on the kingside, this push is going nowhere, and that's exactly how it went down. d4 is such a better move here... +0.26

11 ... d6
12 d4

Hoping for cxd... -0.31

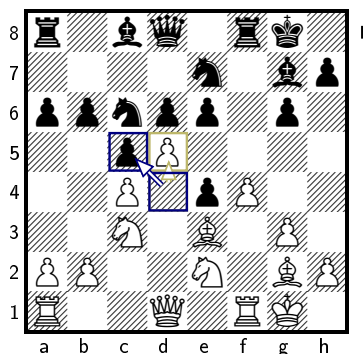
12 ... fx e4



Well, of course. Bother. On the other hand, I own that e-pawn now... -0.20

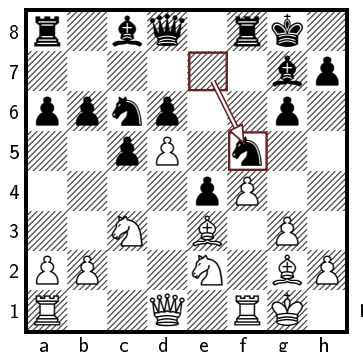
13 d5?!

Oddly, the skittles room thought this was fine, but stockfish much prefers a straight dxc exchange here. -1.15 / -0.20



13 dxc5 ♗f5 14 ♗f2 bxc5 15 ♖xe4 ♖b8 16 ♖b1 ♗b7 17 ♗g5 ♗e8 18 ♖e1 ♖c8 19 b3 ♗cd4 20 ♗xd4 ♗xd4 21 ♗xb7 ♖xb7 22 b4 ♖c6 23 bxc5 ♖xb1 24 ♖xb1 ♖xc5=

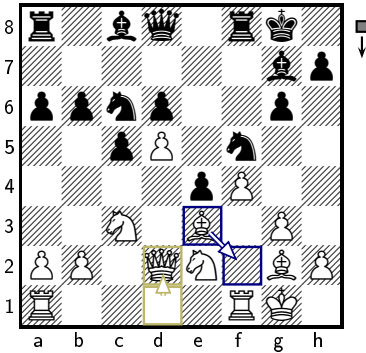
13 ... exd5
14 cxd5 ♗f5



Oh, feck. Well, this put the boot into all my plans here. Post-game analysis says it's not the end of the line, but it certainly gives things a shove towards the end... -0.54

15 ♖d2?!

Now this is odd. Skittles room and myself both agree on Qd2 as the best move and Bf2 as being too passive, but stockfish goes in the exact opposite direction... -1.35 / -0.54



15 ♕f2 ♘cd4 16 ♘xe4 ♘xe2+ 17 ♖xe2 ♘d4 18 ♖d2 ♖a7 19 ♖fe1 ♖e7 20 ♖e3 ♕f5 21 ♖ae1

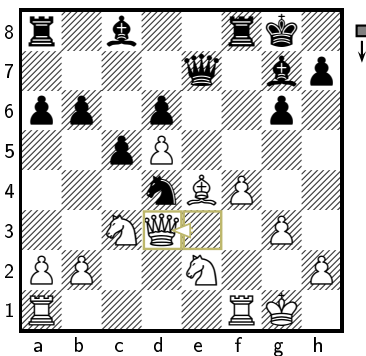
15 ... ♘xe3
16 ♖xe3 ♘d4

All this was as expected after Nd5 -1.80

17 ♕xe4 ♖e7

First move in a while that was a surprise. -1.86

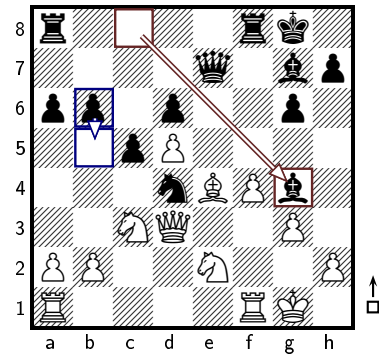
18 ♖d3



Trying to cover all three minor pieces and feeling a bit on the back foot here. -2.21

18 ... ♕g4?!

And again, stockfish and the skittles room differ completely! -1.14 / -2.21

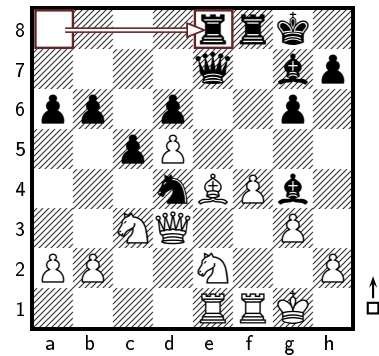


18... b5 19 ♖ae1 b4 20 ♘d1 ♕d7 21 ♘xd4 ♕xd4+ 22 ♘f2 ♕b5 23 ♖c2 ♕xf1 24 ♖xf1 ♖ae8 25 ♖g2 ♖g7 26 ♘d3 ♖d7 27 ♖h1 ♖e7 28 ♘f2 ♖fe8 29 ♖g2 ♕xf2+

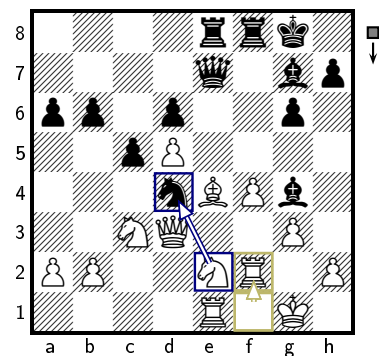
19 ♖ae1

Saw Bg4 a move or so back, this was the best response I could think of. -1.83

19 ... ♖ae8



20 ♖f2?+



Skittles room picks this out as the mistake that lost the piece, which is what lead to the loss of the game... -2.75 / -1.17

20 ♘xd4 ♕xd4+ 21 ♖g2 ♖d7 22 ♖h1 b5 23 ♕g2 ♕f5 24 ♖d2 ♖f7 25 ♖xe8+ ♖xe8 26 ♖e1 ♖e7 27 ♖xe7 ♖xe7 28 a3 ♖f7 29 ♕f3 ♕e3 30 ♖e2 c4 31 ♖g2 ♕d3 32 ♖e1 ♕d4 33 ♖d2 ♕b6

